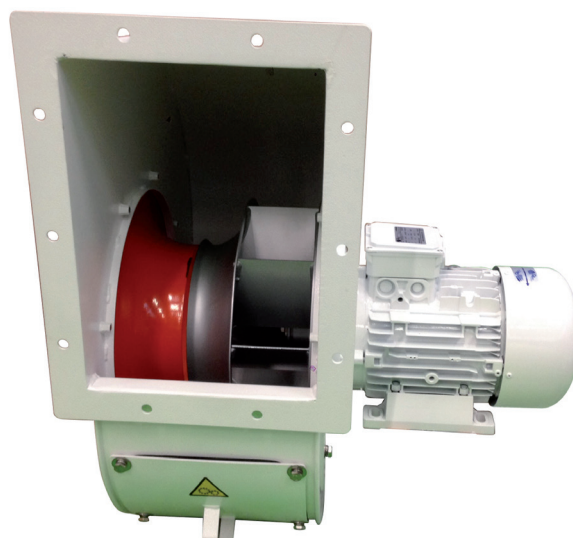


BLR

Ventilatori centrifughi / Centrifugal electric blowers



BLR

DESCRIZIONE E APPLICAZIONI

Ventilatori centrifughi ad alto rendimento in grado di garantire portate elevate di aria pulita o leggermente polverosa con temperature fino a 60°C. Questi ventilatori sono largamente utilizzati sulle imbarcazioni per l'aspirazione e la ventilazione di aria nei locali chiusi (WC, cucine, sala macchine, ecc.)

CARATTERISTICHE COSTRUTTIVE

- Carcassa: a spirale in acciaio verniciato.
- Ventola: in acciaio a pale rovesciate, dinamicamente e staticamente bilanciata.

MOTORE ELETTRICO

- **Corrente Alternata:**
Motore elettrico asincrono 230V monofase (M) / 230÷400V / 400÷690V trifase (T), 50Hz, protezione IP54+55, Classe di Isolamento F, Servizio continuo (S1).

ORIENTAMENTO

Attenzione: l'orientamento dei nostri ventilatori deve essere necessariamente indicato in fase di ordine

- **RD:** direzione destra
- **LD:** direzione sinistra

DESCRIPTION AND USE

High efficiency Centrifugal electric blowers suitable to grant very high capacities of clean or slightly dusty air with temperature up to 60° C. This fan are widely used on board for suction and ventilation of air in closed environments (WC, kitchens, engine rooms, etc.).

CONSTRUCTION FEATURES

- Spiral casing: made of painted steel.
- Fan: steel backward curved blades, dynamically and statically balanced.

ELECTRIC MOTOR

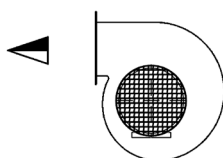
- **Alternating Current:**
Induction electric motor, 230V single-phase (M) / 230÷400V / 400÷690V three-phase (T), 50Hz, Protection IP54+55, Insulation Class F, Continuous Duty (S1).

ORIENTATION

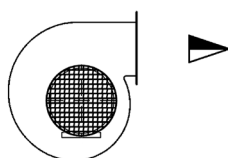
Attention: the orientation of the blower must be stated when the ordering

- **RD:** right direction
- **LD:** left direction

Standard

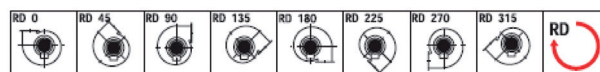


LD 90°
Direzione SINISTRA
LEFT direction

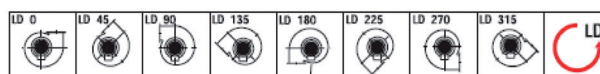


RD 90°
Direzione DESTRA
RIGHT direction

Esecuzioni a richiesta Executions on request



Rotazione oraria - Clockwise rotation sense



Rotazione anti-oraria - Anti-Clockwise rotation sense

Vista lato motore
View from motor side

PRESTAZIONI / PERFORMANCES

Modello Type	Voltaggio Voltage (V)	Potenza Power		Assorbimento Absorption (A)	Giri/min. RPM	dBA	Portata Max. Max. delivery (m ³ /min.)	Pressione Max. Max. pressure (mmH ₂ O)
		HP	kW					
BLR 40/2 A	230+400T	5	4	14,7-8,5	2800	70	120	208
BLR 40/2 B	230+400T	7,5	5,5	21-12	2800	76	168	231
BLR 45/2 A	230+400T	10	7,5	15,4-8,9	2800	79	210	257
BLR 45/2 B	230+400T	15	11	21,6-12,5	2800	82	270	307
BLR 45/4 A	230M	1	0,75	5,3	1400	59	78	59
	230+400T	1	0,75	3,6-2,1	1400	59	78	59
BLR 45/4 B	230M	1,5	1,1	7	1400	60	90	71
	230+400T	1,5	1,1	4,8-2,8	1400	60	90	71
BLR 50/4 A	230M	2	1,5	9,3	1400	67	150	77
	230+400T	2	1,5	6,7-3,9	1400	67	150	77
BLR 50/4 B	230M	3	2,2	13	1400	69	180	89
	230+400T	3	2,2	9,35-5,4	1400	69	180	89
BLR 56/4 A	230+400T	4	3	12,3-7,1	1400	70	210	99
BLR 56/4 B	230+400T	6	4	15,6-9	1400	72	270	112
BLR 63/4 A	230+400T	7,5	5,5	11,6-6,7	1400	73	330	127
BLR 63/4 B	230+400T	10	7,5	14,5-8,4	1400	73	360	142

230M, 50Hz: corrente alternata monofase / *single-phase alternating current*

230+400T, 50Hz: corrente alternata trifase / *three-phase alternating current*

A richiesta disponibili altri voltaggi a 50Hz e 60Hz / *Available on request other voltages at 50Hz and 60Hz.*

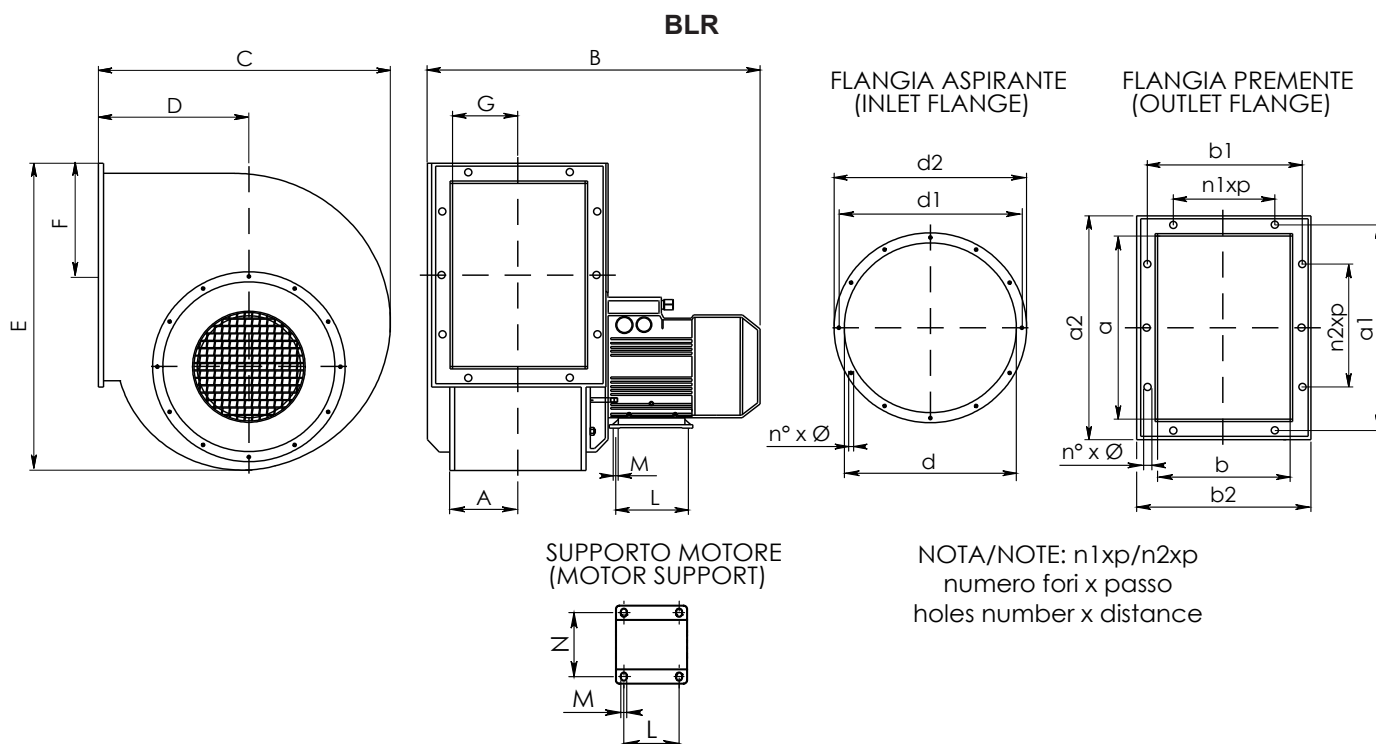
CORRENTE ALTERNATA (c.a.) / ALTERNATING CURRENT (a.c.)

PRESTAZIONI / PERFORMANCES

Modello Type	Voltaggio Voltage (V)	Potenza / Power		Assorbimento Absorption (A)	Giri/min. RPM	dBA	Pressione totale Total pressure	Pa	2038	2009	1970	1921	1813	1666				
		HP	kW					mmH ₂ O	208	205	201	196	185	170				
BLR 40/2A	230÷400T	5	4	14,7-8,5	2800	70	Portata Delivery (m3/h)	3600	3960	4320	4680	5400	6120					
Modello Type	Voltaggio Voltage (V)	Potenza / Power		Assorbimento Absorption (A)	Giri/min. RPM	dBA	Pressione totale Total pressure	Pa	2264	2234	2205	2117	2019	1823	1666	1411	1137	
		HP	kW					mmH ₂ O	231	228	225	216	206	186	170	144	116	
BLR 40/2 B	230÷400T	7,5	5,5	21-12	2800	76	Portata Delivery (m3/h)	3960	4320	4680	5400	6120	7200	7920	9000	10080		
Modello Type	Voltaggio Voltage (V)	Potenza / Power		Assorbimento Absorption (A)	Giri/min. RPM	dBA	Pressione totale Total pressure	Pa	2519	2421	2244	2117	1911	1676	1509	1039		
		HP	kW					mmH ₂ O	257	247	229	216	195	171	154	106		
BLR 45/2 A	400÷690T	10	7,5	15,4-8,9	2800	79	Portata Delivery (m3/h)	5400	6120	7200	7920	9000	10080	10800	12600			
Modello Type	Voltaggio Voltage (V)	Potenza / Power		Assorbimento Absorption (A)	Giri/min. RPM	dBA	Pressione totale Total pressure	Pa	3009	2940	2813	2715	2548	2372	2244	1872	1460	990
		HP	kW					mmH ₂ O	307	300	287	277	260	242	229	191	149	101
BLR 45/2 B	400÷690T	15	11	21,6-12,5	2800	82	Portata Delivery (m3/h)	5400	6120	7200	7920	9000	10080	10800	12600	14400	16200	
Modello Type	Voltaggio Voltage (V)	Potenza / Power		Assorbimento Absorption (A)	Giri/min. RPM	dBA	Pressione totale Total pressure	Pa	578	559	529	500	461	431	392			
		HP	kW					mmH ₂ O	59	57	54	51	47	44	40			
BLR 45/4 A	230M	1	0,75	5,3	1400	59	Portata Delivery (m3/h)	2520	2880	3240	3600	3960	4320	4680				
	230÷400T	1	0,75	3,6-2,1	1400	59		2520	2880	3240	3600	3960	4320	4680				
Modello Type	Voltaggio Voltage (V)	Potenza / Power		Assorbimento Absorption (A)	Giri/min. RPM	dBA	Pressione totale Total pressure	Pa	696	686	666	647	627	598	568	500		
		HP	kW					mmH ₂ O	71	70	68	66	64	61	58	51		
BLR 45/4 B	230M	1,5	1,1	7	1400	60	Portata Delivery (m3/h)	2520	2880	3240	3600	3960	4320	4680	5400			
	230÷400T	1,5	1,1	4,8-2,8	1400	60		2520	2880	3240	3600	3960	4320	4680	5400			
Modello Type	Voltaggio Voltage (V)	Potenza / Power		Assorbimento Absorption (A)	Giri/min. RPM	dBA	Pressione totale Total pressure	Pa	755	735	715	696	637	588	519	441	333	
		HP	kW					mmH ₂ O	77	75	73	71	65	60	53	45	34	
BLR 50/4 A	230M	2	1,5	9,3	1400	67	Portata Delivery (m3/h)	3600	3960	4320	4680	5400	6120	7200	7920	9000		
	230÷400T	2	1,5	6,7-3,9	1400	67		3600	3960	4320	4680	5400	6120	7200	7920	9000		
Modello Type	Voltaggio Voltage (V)	Potenza / Power		Assorbimento Absorption (A)	Giri/min. RPM	dBA	Pressione totale Total pressure	Pa	872	862	843	804	754	686	617	510	441	343
		HP	kW					mmH ₂ O	89	88	86	82	77	70	63	52	45	35
BLR 50/4 B	230M	3	2,2	13	1400	69	Portata Delivery (m3/h)	3960	4320	4680	5400	6120	7200	7920	9000	10080	10800	
	230÷400T	3	2,2	9,35-5,4	1400	69		3960	4320	4680	5400	6120	7200	7920	9000	10080	10800	
Modello Type	Voltaggio Voltage (V)	Potenza / Power		Assorbimento Absorption (A)	Giri/min. RPM	dBA	Pressione totale Total pressure	Pa	970	941	882	813	725	627	549	382		
		HP	kW					mmH ₂ O	99	96	90	83	74	64	56	39		
BLR 56/4 A	230÷400T	4	3	12,3-7,1	1400	70	Portata Delivery (m3/h)	5400	6120	7200	7920	9000	10080	10800	12600			
Modello Type	Voltaggio Voltage (V)	Potenza / Power		Assorbimento Absorption (A)	Giri/min. RPM	dBA	Pressione totale Total pressure	Pa	1098	1058	1019	951	872	813	637	470	304	
		HP	kW					mmH ₂ O	112	108	104	97	89	83	65	48	31	
BLR 56/4 B	230÷400T	5,5	4	15,6-9	1400	72	Portata Delivery (m3/h)	6120	7200	7920	9000	10080	10800	12600	14400	16200		
Modello Type	Voltaggio Voltage (V)	Potenza / Power		Assorbimento Absorption (A)	Giri/min. RPM	dBA	Pressione totale Total pressure	Pa	1245	1205	1166	1127	1029	902	774	627	470	
		HP	kW					mmH ₂ O	127	123	119	115	105	92	79	64	48	
BLR 63/4 A	400÷690T	7,5	5,5	11,6-6,7	1400	73	Portata Delivery (m3/h)	7920	9000	10080	10800	12600	14400	16200	18000	19800		
Modello Type	Voltaggio Voltage (V)	Potenza / Power		Assorbimento Absorption (A)	Giri/min. RPM	dBA	Pressione totale Total pressure	Pa	1392	1362	1333	1303	1225	1127	1019	882	755	608
		HP	kW					mmH ₂ O	142	139	136	133	125	115	104	90	77	62
BLR 63/4 B	400÷690T	10	7,5	14,5-8,4	1400	73	Portata Delivery (m3/h)	7920	9000	10080	10800	12600	14400	16200	18000	19800	21600	

CORRENTE ALTERNATA (c.a.) / ALTERNATING CURRENT (a.c.)

DIMENSIONI E PESI / DIMENSIONS AND WEIGHTS



Modello Type	Corrente Current	A	B	C	D	E	F	G	L	M	N	Peso Weight (kg)
BLR 40/2A	c.a. - a.c.	147	668	655	285	815	245	147	140	12	190	96
BLR 40/2 B	c.a. - a.c.	147	730	655	285	815	245	147	140	12	216	109
BLR 45/2 A	c.a. - a.c.	163	764	735	320	915	275	165	140	12	216	125
BLR 45/2 B	c.a. - a.c.	163	900	735	320	915	275	165	210	15	254	162
BLR 45/4 A	c.a. - a.c.	163	592	735	320	915	275	165	100	10	125	90
BLR 45/4 B	c.a. - a.c.	163	632	735	320	915	275	165	125	10	140	96
BLR 50/4 A	c.a. - a.c.	183	671	832	360	1000	303	185	125	10	140	125
BLR 50/4 B	c.a. - a.c.	183	741	832	360	1000	303	185	140	12	160	131
BLR 56/4 A	c.a. - a.c.	205	797	940	400	1126	332	206	140	12	160	143
BLR 56/4 B	c.a. - a.c.	205	797	940	400	1126	332	206	140	12	216	148
BLR 63/4 A	c.a. - a.c.	230	908	1052	450	1260	373	231	140	12	216	192
BLR 63/4 B	c.a. - a.c.	230	908	1052	450	1260	373	231	178	12	216	206

Modello Type	Corrente Current	FLANGIA ASPIRANTE / INLET FLANGE				FLANGIA PREMENTE / OUTLET FLANGE								
		d	d1	d2	n° x Ø	a	a1	a2	b	b1	b2	n1xp	n2xp	n° x Ø
BLR 40/2A	c.a. - a.c.	405	448	485	No. 8 x Ø 12	404	448	484	288	332	368	No. 3 x 125 mm	No. 4 x 125 mm	No. 14 x Ø 12
BLR 40/2 B	c.a. - a.c.	405	448	485	No. 8 x Ø 12	404	448	484	288	332	368	No. 3 x 125 mm	No. 4 x 125 mm	No. 14 x Ø 12
BLR 45/2 A	c.a. - a.c.	455	497	535	No. 8 x Ø 12	453	497	533	322	366	402	No. 3 x 125 mm	No. 4 x 125 mm	No. 14 x Ø 12
BLR 45/2 B	c.a. - a.c.	455	497	535	No. 8 x Ø 12	453	497	533	322	366	402	No. 3 x 125 mm	No. 4 x 125 mm	No. 14 x Ø 12
BLR 45/4 A	c.a. - a.c.	455	497	535	No. 8 x Ø 12	453	497	533	322	366	402	No. 3 x 125 mm	No. 4 x 125 mm	No. 14 x Ø 12
BLR 45/4 B	c.a. - a.c.	455	497	535	No. 8 x Ø 12	453	497	533	322	366	402	No. 3 x 125 mm	No. 4 x 125 mm	No. 14 x Ø 12
BLR 50/4 A	c.a. - a.c.	505	551	585	No. 8 x Ø 14	507	551	587	361	405	441	No. 3 x 125 mm	No. 4 x 125 mm	No. 14 x Ø 12
BLR 50/4 B	c.a. - a.c.	505	551	585	No. 8 x Ø 14	507	551	587	361	405	441	No. 3 x 125 mm	No. 4 x 125 mm	No. 14 x Ø 12
BLR 56/4 A	c.a. - a.c.	565	629	665	No. 16 x Ø 14	569	629	669	404	464	504	No. 3 x 160 mm	No. 4 x 160 mm	No. 14 x Ø 14
BLR 56/4 B	c.a. - a.c.	565	629	665	No. 16 x Ø 14	569	629	669	404	464	504	No. 3 x 160 mm	No. 4 x 160 mm	No. 14 x Ø 14
BLR 63/4 A	c.a. - a.c.	635	698	735	No. 16 x Ø 14	638	698	738	453	513	553	No. 3 x 160 mm	No. 4 x 160 mm	No. 14 x Ø 14
BLR 63/4 B	c.a. - a.c.	635	698	735	No. 16 x Ø 14	638	698	738	453	513	553	No. 3 x 160 mm	No. 4 x 160 mm	No. 14 x Ø 14

Misure in millimetri (mm), dimensioni non impegnative / Measures in millimeter (mm), dimensions approximated